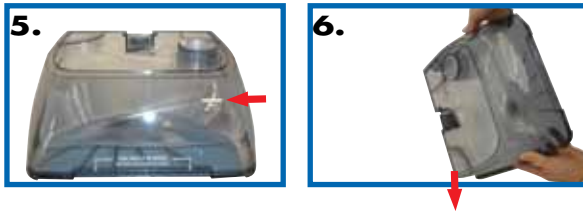


Carpet cleaning

1. While pressing the trigger, make one slow forward wet pass and another one back
2. Release the trigger and make one slow forward and backward pass over the same area. Repeated passes will help aid in dry time
3. Continue passes until cleaning area is complete
4. When the dirty water reaches the "FULL" line on the tank, it is time to empty
5. Empty dirty water by removing tank from base of machine. Carry to sink or outside to dispose of water. Unlatch top of tank and pour dirty water through triangle shaped opening in corner
6. Refill as needed, following steps 4 & 5 under "Before you begin cleaning"



Cleaning with attachments

1. Set ReadyTools dial to the "TOOLS" setting
2. Attach the cleaning tool to the end of the hose
3. Clean by pressing the trigger to spray solution onto the area to be cleaned
4. Slowly scrub the tool back and forth over the soiled surface
5. Tilt the tool forward to suction liquid
6. When the dirty water reaches the "FULL" line on the tank, follow instruction #5 under "Carpet Cleaning" to empty tank
7. When cleaning is complete, remove and rinse tool in warm water



Refer to the User's Guide for full instructions on how to clean, store and maintain your machine

For additional tips and troubleshooting

Please refer to User's Guide

Earn BISSELL rewards! Register your product today!

Visit: www.bissell.com

1204357

© 2011 BISSELL Homecare, Inc.
BISSELL Homecare, Inc.
P.O. Box 1888
Grand Rapids, MI 49501



PROheat2X®

8920, 8930, 8960,

9200, 9300, 9400 SERIES

BISSELL is happy to be of service.
Contact us directly at **1-800-237-7691** or
visit the website for helpful instructions at
www.bissell.com

PLEASE DO NOT RETURN THIS PRODUCT TO THE STORE
PLEASE KEEP FOR FUTURE REFERENCE

Quick Start Guide

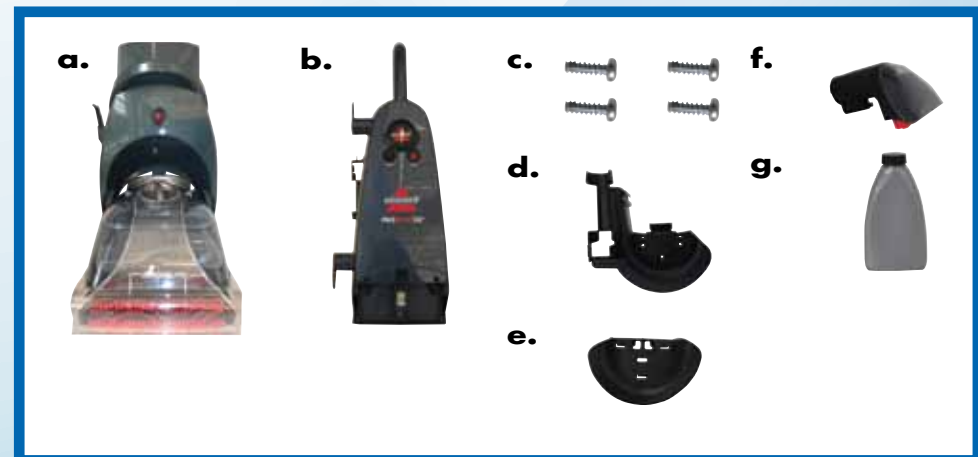
⚠ WARNING:

Refer to the enclosed user guide for complete instructions and important safety notices.

Package contents:

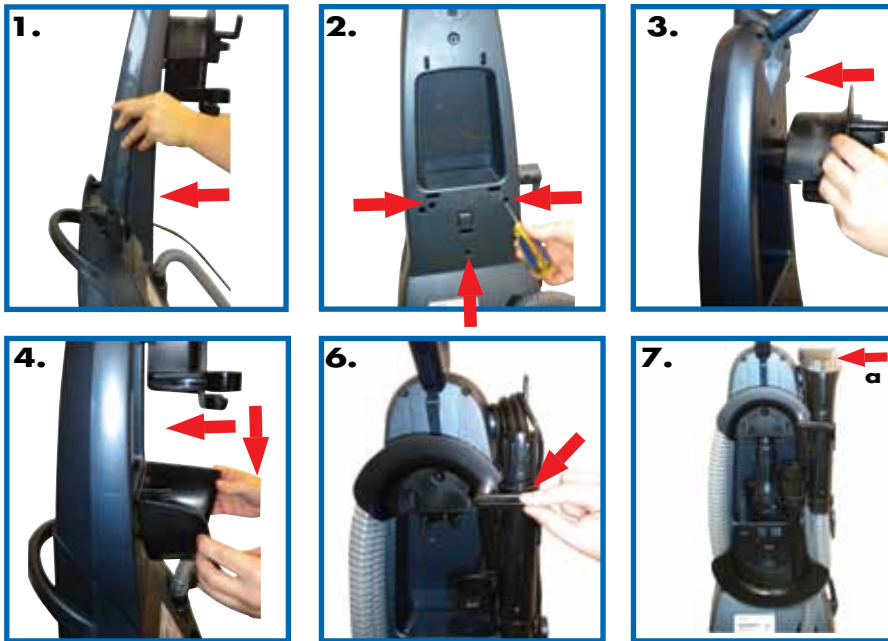
- | | |
|--------------------------------------|--|
| a. Machine Base & 2 tank system | e. Lower Hose Rack |
| b. Upper Handle | f. Tool Attachment(s)
(varies by model) |
| c. 4 Screws - taped to handle | g. Formula
(varies by model) |
| d. Upper Hose Rack | |

Phillips head screw driver is needed for assembly



Assembly

1. Slide upper handle onto machine base
2. Screw 3 screws into the marked holes
3. Place upper hose rack onto back of upper handle, and secure with screw
4. Place lower hose rack onto back of upper handle by pushing in and sliding down until it snaps firmly into place
5. Wrap power cord and flex hose
6. Keep flex hose snugly in place by using the hose secure latch
7. Attach tool to hose grip (extra tool storage on back)

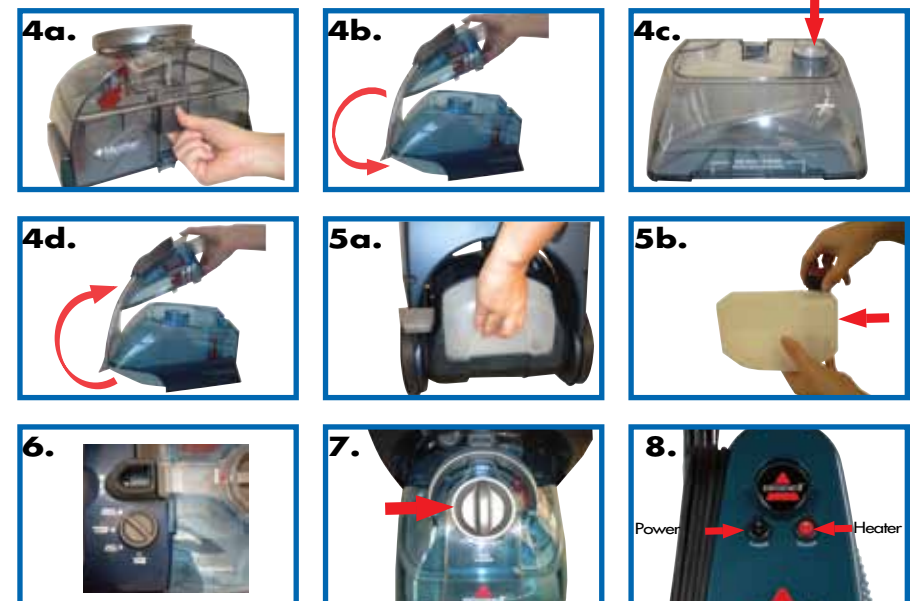


a. Tough Stain Brush

Your assembly is now complete.

Before you begin cleaning

1. Move furniture to another area if cleaning an entire room
2. Remove large dirt and debris from carpet (See User's Guide for more details)
3. Pre-treat spots & stains and heavy traffic areas (optional- see User's Guide)
4. Fill the clean water tank
 - 4a. Unlatch the top by lifting up on tank latch
 - 4b. Remove the top
 - 4c. Fill the bladder with clean hot tap water
 - 4d. Re-attach top by hooking the lip of the tank top into the groove of the tank bottom and secure the latch
5. Fill the formula tank with water and BISSELL 2X formula
 - 5a. Remove formula tank and unscrew the cap and insert
 - 5b. Fill with water to the WATER line
 - 5c. Fill with BISSELL 2X formula to the FORMULA line
 - 5d. Replace cap and insert and place back into formula tank holder
6. Set Custom Clean Dial (located on the foot of the unit or on the upper handle)
7. Set ReadyTools Dial ("FLOOR CLEANING" for carpet cleaning or "TOOLS" for cleaning with the hose and tool)
8. Plug into outlet, and turn the power and heater (if desired) switch on
9. If using the heater, let the machine warm up for 1 minute before cleaning



For complete user's guide, visit www.bissell.com